



www.preciz.com

COMPANY PROFILE



Our Company

PRECIZ AL ENERGY's main business activity is design, fabrication and installation of glass curtain walls, rainscreen claddings, windows and doors, PV projects development. We managed to become one of the main façade contractors in Bulgaria and therefore we've been awarded from the Bulgarian Construction Chamber. The headquarter is situated in Rousse, Bulgaria. All production facilities are also located here.

Our main mission has always been to deliver highest quality products to our customers, satisfying their highest requirements and maintain quality after sales service.

Our Team

We employ more than 150 employees. Our experienced team of designers do the complete façade design of all the projects we are granted. Our fabricators and installators have more than 10 years of experience with us in different types of projects – commercial centers, office buildings, residential buildings, public buildings, hotels and resorts complexes.

Our Customers

Some of our main prestigious projects are The New Sofia Airport Terminal, European Trade Center Sofia, Megapark Soravia Sofia, Business Park's Sofia and Varna, Pipera Tower Bucharest.

We are preferred façade contractor for most of the foreign property developers and investment companies. Some of our main customers, besides the local governmental institutions, are STRABAG SE Austria, SORAVIA Group Austria, NATO, CARREFOUR France, PLAN&BAU Austria and many more. We are active in the nearby countries as well – Romania, Macedonia, Greece. We've delivered our products to some French, Austrian, Spanish, Moldavian and SAR customers too.

Quality

The integrated in the company EN ISO 9001:2008 Quality Management System is certified by Bureau Veritas and has been audited annually since 2003. Recently we've integrated EN ISO 14001:2004 Environmental Management and OHSAS 18001:2007 Occupational health and safety systems.



Products

We offer complete range of products to satisfy the complex building demand. The list includes:

- Glass curtain walls;
- Point-fixed and structural glazing;
- Unitized curtain walls;
- Windows and doors;
- Fire-protective doors and partition walls;
- Office partition walls;
- Sun protections;
- Ventilated facades, rainscreens;
- Roof lights;
- Building integrated Photovoltaic solutions;
- In-grid and off-grid Photovoltaic systems;
- Insulating Glass Units.

We could process aluminium, steel and PVC-u profiles depending on customer choice.

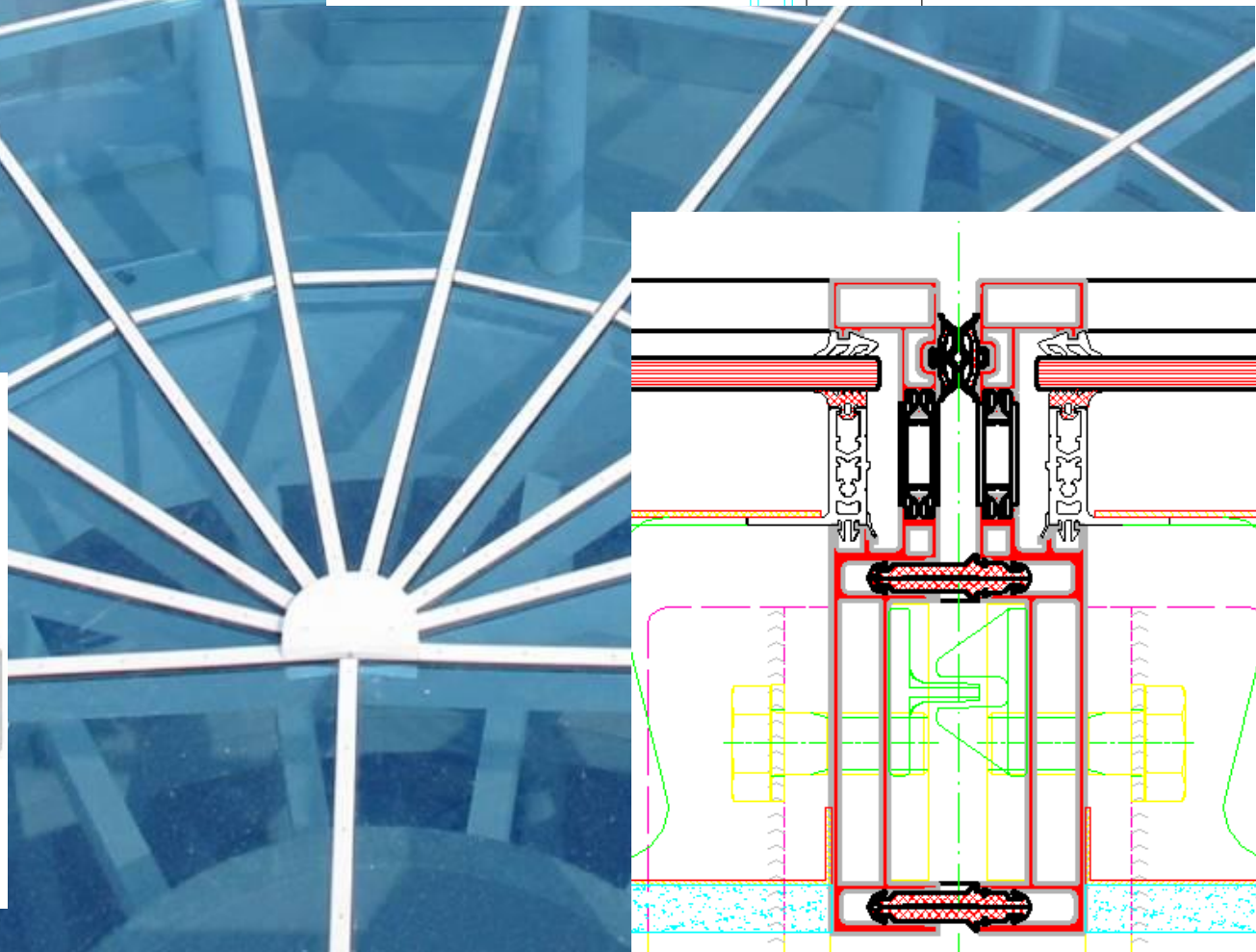
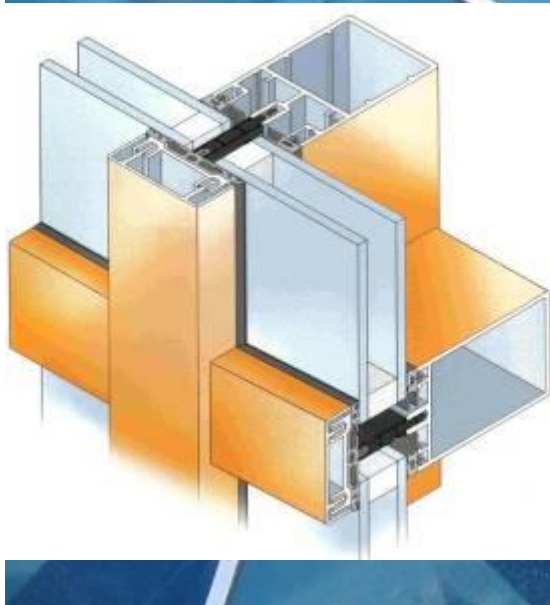
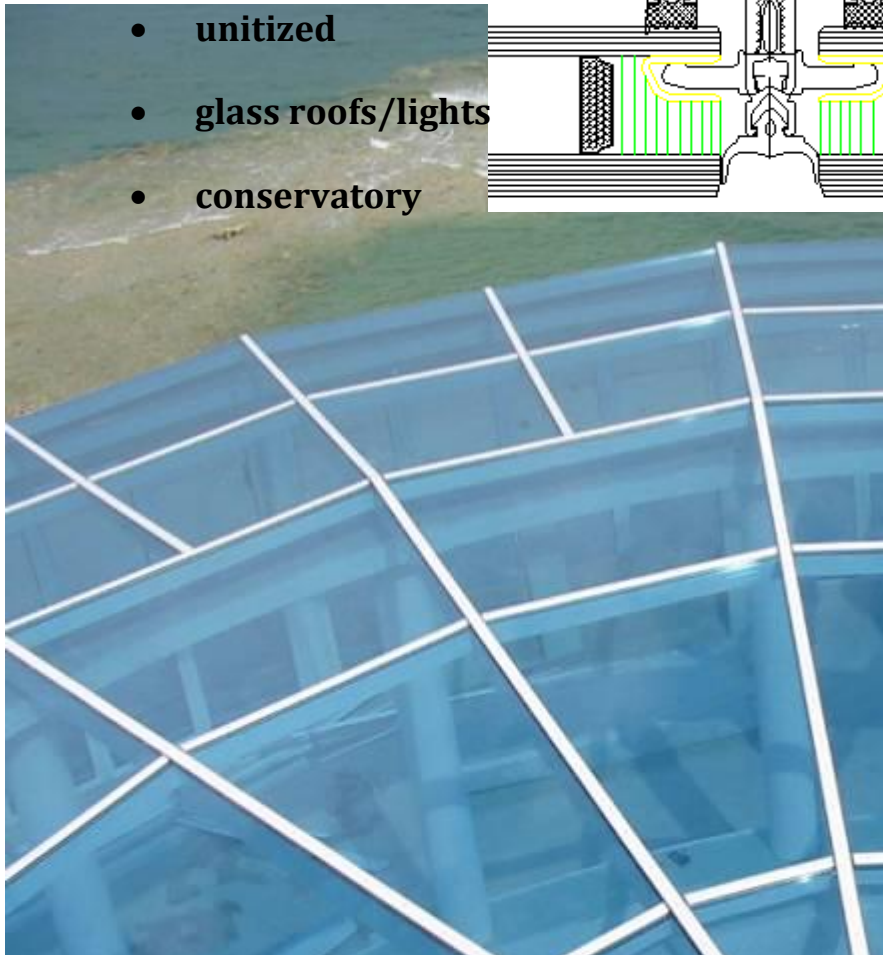
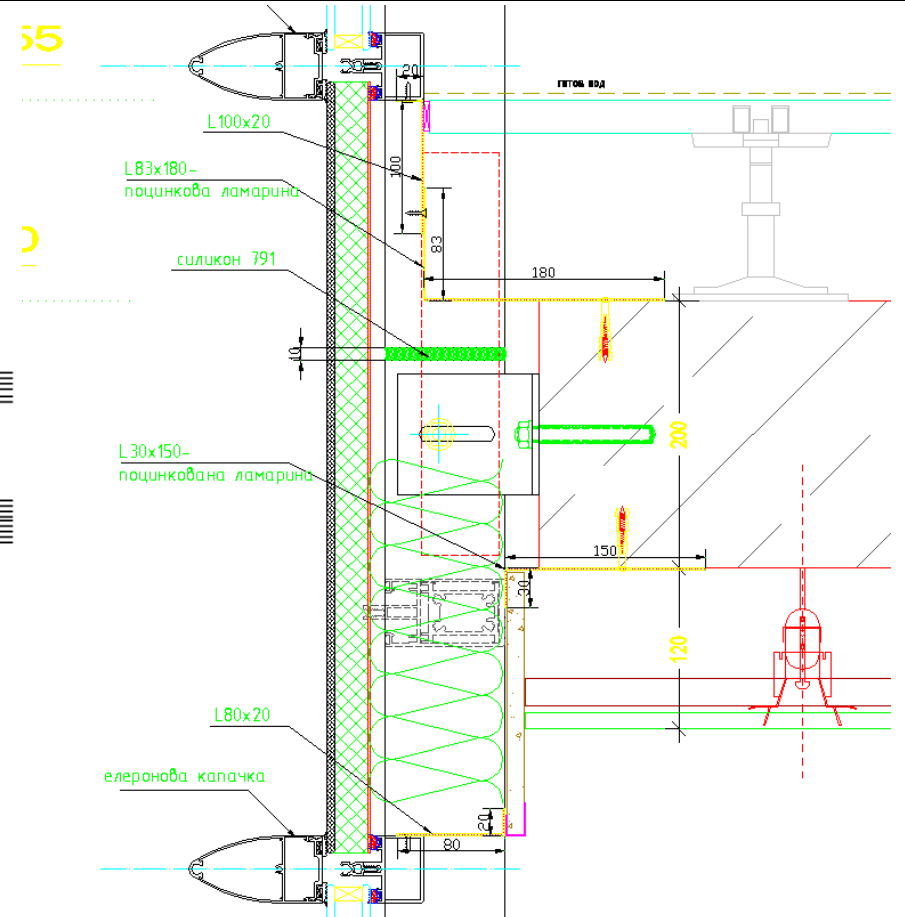
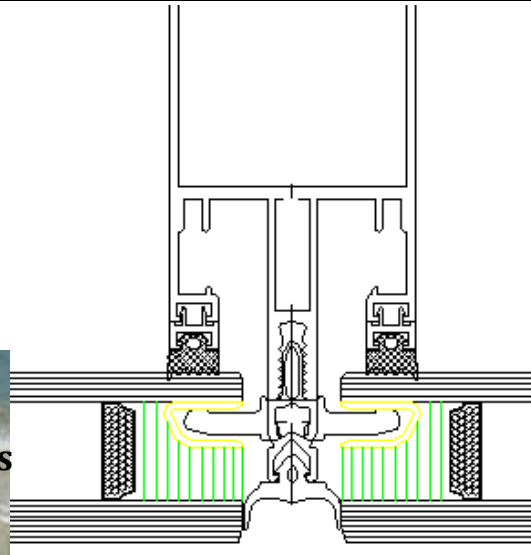
Partners

Our suppliers are well-known producers like Schüco, Wicona, Hueck, Metra, Dorma, Geze, Gretsch-Unitas, Maco, Assa Abloy, Glaverbel - AGC, Saint Gobain and many more.



Glass curtain walls –

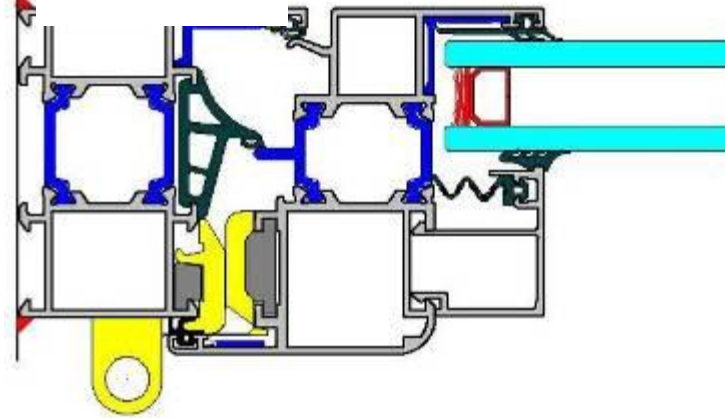
- structural
- capped
- point fixed
- unitized
- glass roofs/lights
- conservatory



Windows & Doors

- aluminium
- steel
- PVC-u
- Fire-protective
- Folding & sliding
- Internal partitions

Aluminium



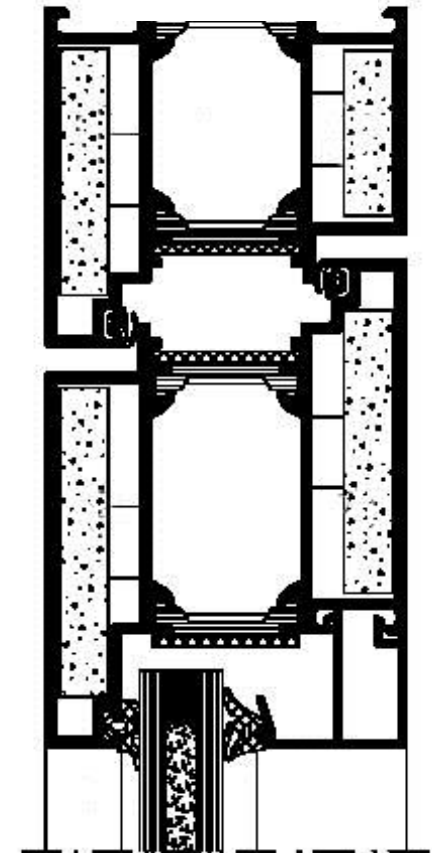
PVC

Partitions

Folding-sliding



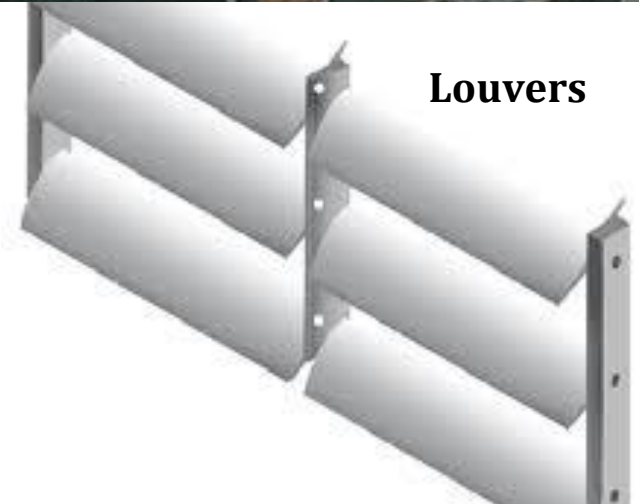
Fire-protective



Company Profile

Sun Protection

- Louvers
- Peaks
- Venetian Blinds
- Awnings



Ventilated facades

- Aluminium composite panels
- High-pressured laminates
- Ceramic tiles
- Fiber cement
- Glass

Ceramic Tiles

Aluminium composite panels

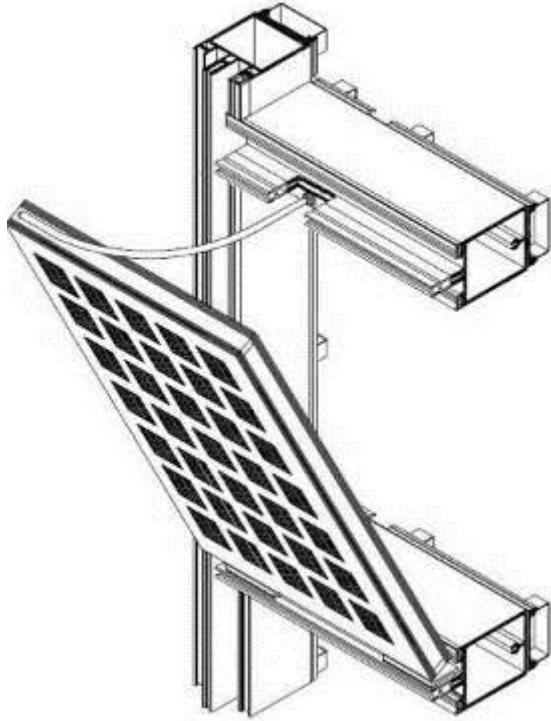


High-pressured laminates



Glass

Building Integrated PV & PV in-/off-grid systems



Technology

Our production base comprises of windows/doors fabrication, curtain wall fabrication, cladding fabrication facilities, powder-coating facility, glass processing and glass unit production facility, PV modules fabrication facility.

The **win/doors fabrication** area is equipped with latest CNC machining center by Schüco and FOM cutting machinery for aluminium and steel profiles. There are cutting and welding machinery for PVC-u windows and doors production.



The **Curtain wall fabrication facility** is equipped with another CNC 4-axis machining center and four-corner crimping machine by Schüco. There is an area suitable *utilized curtain wall* fabrication.

PIC of 4-corner crimping



Our **Glass processing and Glass Units** production facility is equipped with LISEC production line, comprising of glass pane washer, distance profile bender, desiccant filler, glass unit press, gas-filler. The rest of the machinery includes automatic glass pane loading system, automatic glass



Company Profile

Ventilated facades/rainscreens production area includes press-brake, CNC-routing table which could process aluminium sheets, aluminium composite panels

ALUCOBOND, HPL plates **TRESPA**, fibre-cement plates **Eternit**.



Powder coating facility

We could coat the profiles in different RAL



Company Profile

colours, depends on customer requirement.

REFERENCE PROJECTS

European Trade Center Sofia, Bulgaria

Schüco Skyline unitized facade



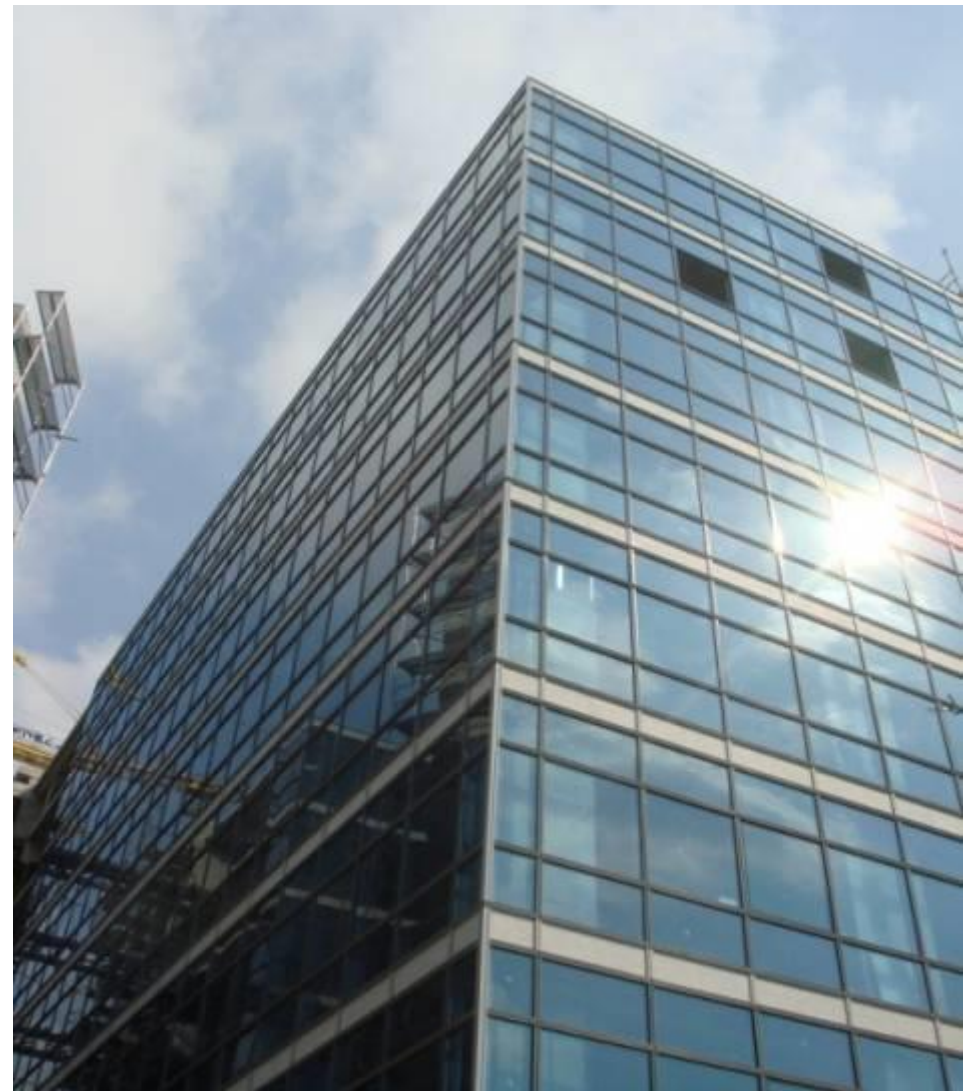
MEGAPARK SORAVIA
Sofia, Bulgaria
Schüco unitized facade



Business Park Sofia

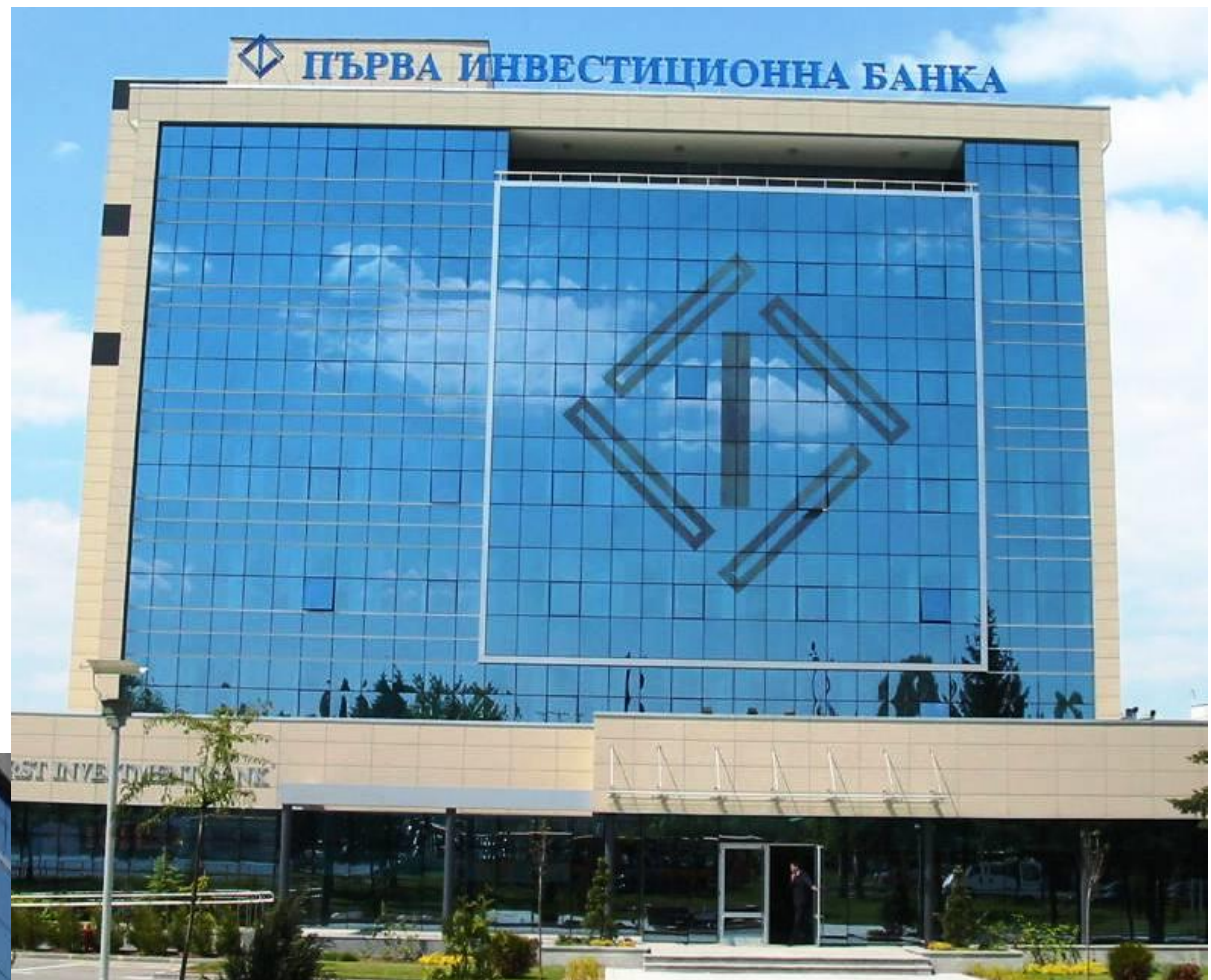
Building 6

Schüco unitized facade



First Investment Bank
Sofia, Bulgaria

Schüco structural facade

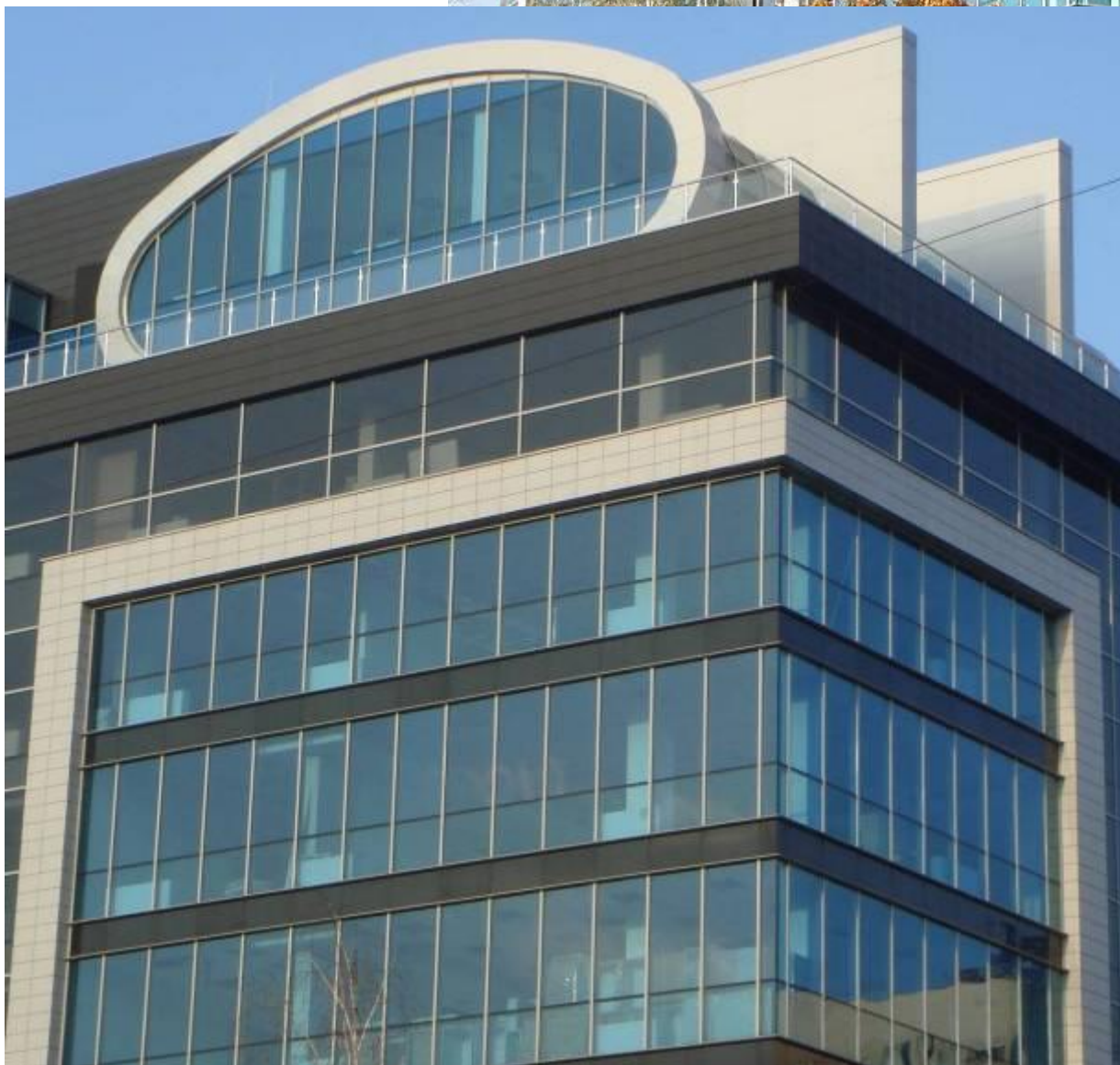


B.R.E.F Office Building

Sofia, Bulgaria

ETEM glass façade

Creaton Ceramic tiles



**New Airport Terminal
Sofia, Bulgaria**

Schüco glass façade

Aluminium box-cladding

*Jansen Fire-protective
steel doors and
partitions*

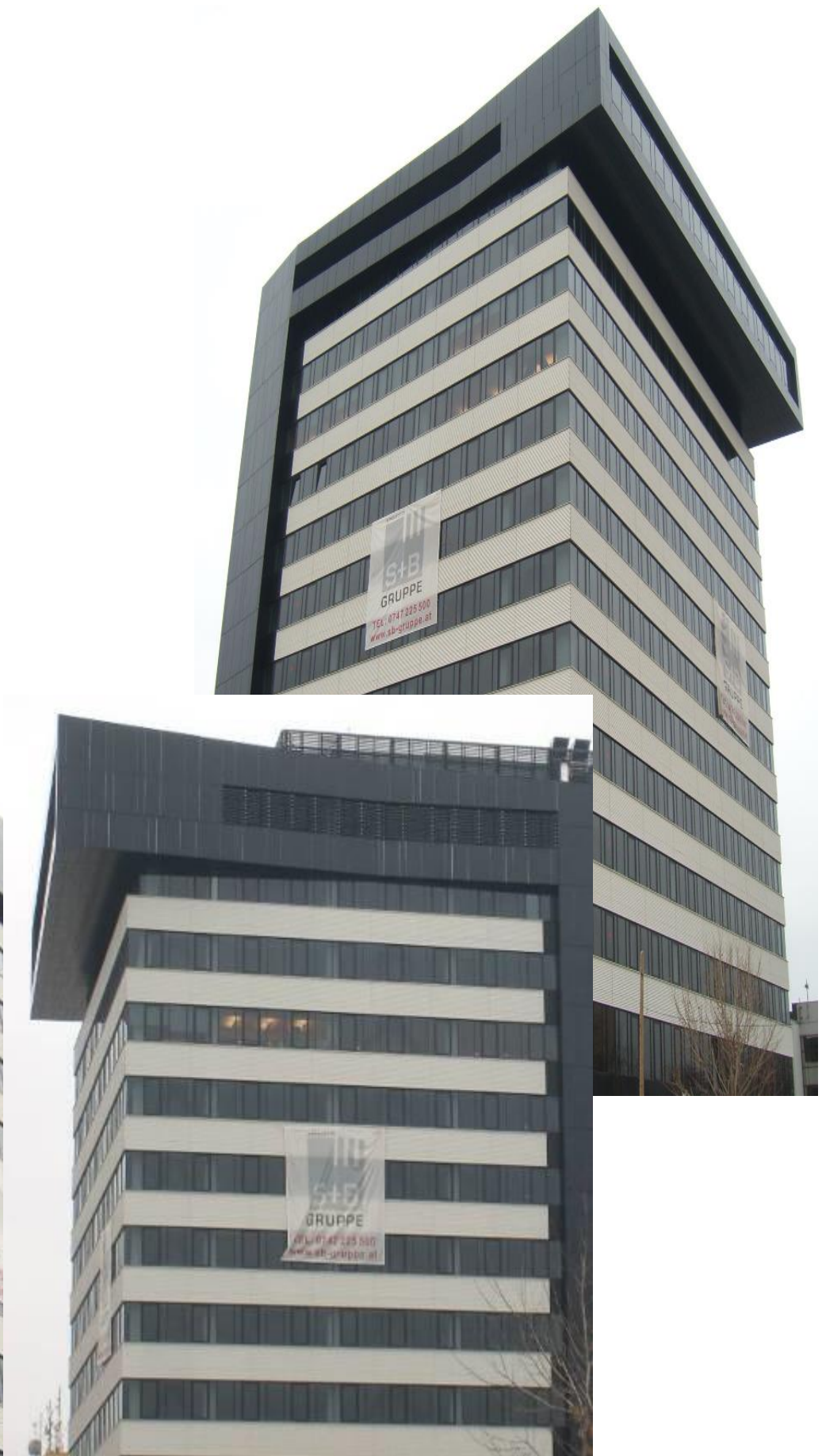


Pipera Tower

Bucharest, Romania

ETEM glass façade

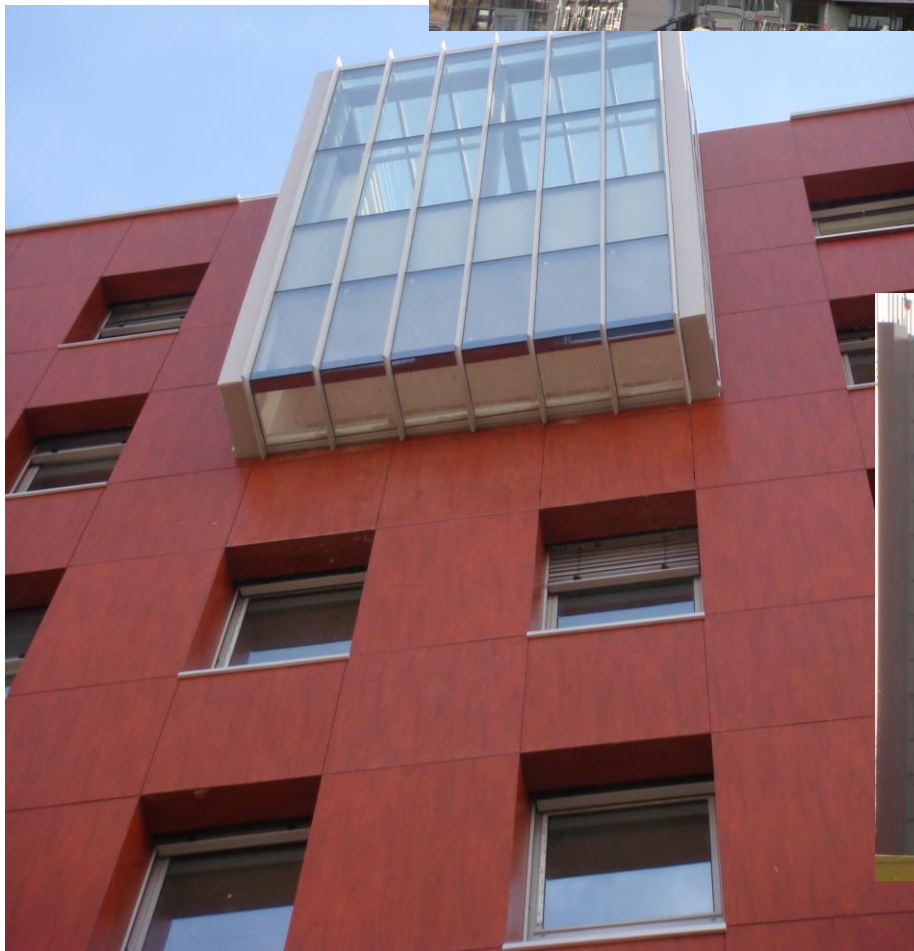
Aluminium Box-cladding



**Business Park Varna
Building 8**

*ETEM glass
façade&Windows*

*Schüco Roof Light
TRESPA HPL cladding*



Business Park Varna

Building 1

ALUMIL glass façade&Windows

Schüco Roof Light

Creaton ceramic tiles





MEGAMALL
ROUSSE, BULGARIA
ETEM glass façade
TRESPA HPL cladding

MALL VARNA
VARNA, BULGARIA
Schüco glass façade
Buchtal ceramic tiles
cladding

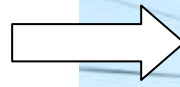


CITY CENTER SOFIA MALL

SOFIA, BULGARIA

METRA glass façade

Buchtal ceramic tiles

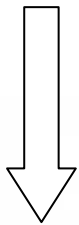


CENTRAL MALL

PLEVEN, BULGARIA

Point-fixed glass façade

Aluminium composite cladding



Company Profile

Private House

Bulgaria

Glass facade

Stone ventilated façade

PVC ventilated facade





CITY CENTRAL
PLEVEN, BULGARIA
Schüco glass façade
Aluminium composite cladding



ORION TRADE CENTER
SOFIA, BULGARIA
ALUMIL glass façade
Aluminium composite cladding





**NATIONAL REVENUE AGENCY
ROUSSE, BULGARIA**

*ETEM glass façade&Windows
Aluminium composite cladding*



Residential Building

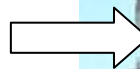
SOFIA, BULGARIA

ALUMIL Windows

Aluminium composite cladding

Creaton ceramic cladding

Glass parapets



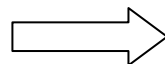


Cosmopolitan Hotel

ROUSSE, BULGARIA

ETEM glass façade&Windows

Aluminium composite cladding



Arena Di Serdica Hotel

SOFIA, BULGARIA

ALUMIL glass façade&Windows

Aluminium composite cladding





CONTACTS:

PRECIZ AL Energy Ltd.

**Mr. Velislav Pavlov
+359 888 267710**

energy@preciz.com

www.preciz.com